



## NKP-G - NORMALIZADA MONOBLOCK - 2 POLOS > 2900 1/min

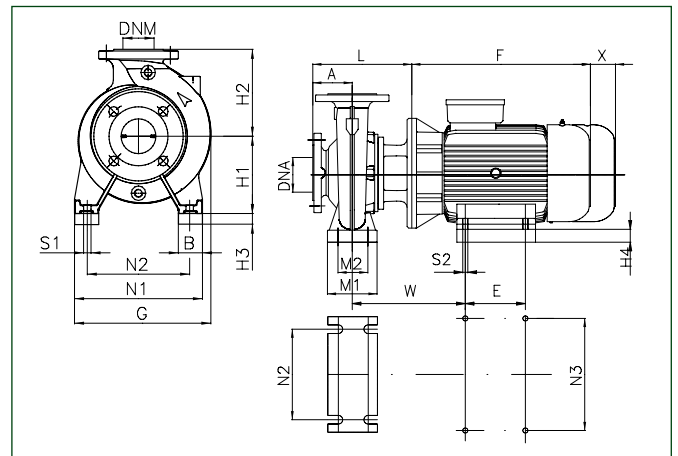
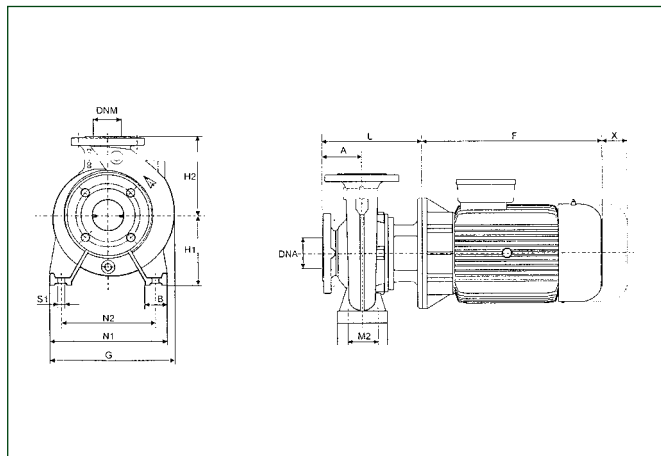
| MODELO                   | CÓDIGO TURBINA FUNDICIÓN | CÓDIGO TURBINA BRONCE | DNA | DNM | DATOS ELÉCTRICOS |         |     |      | DATOS HIDRÁULICOS |       |      |      |      |      |      |      |      |      |       |   |
|--------------------------|--------------------------|-----------------------|-----|-----|------------------|---------|-----|------|-------------------|-------|------|------|------|------|------|------|------|------|-------|---|
|                          |                          |                       |     |     | ALIMENT. 50 Hz   | P2 NOM. |     | In A |                   | m³/h  | 0    | 6    | 12   | 18   | 24   | 30   | 36   | 42   |       |   |
|                          |                          |                       |     |     |                  | kW      | HP  | 230V | 400V              |       |      |      |      |      |      |      |      |      | l/min | 0 |
| NKP-G32-125.1/102/0.75/2 | 1D1K11B3U                | 1D1K21B3U             | 50  | 32  | 3x230-400 V~     | 0.75    | 1   | 2,81 | 1,6               | H (m) | 13   | 12.5 | 11   | 8    |      |      |      |      |       |   |
| NKP-G32-125.1/115/1.1/2  | 1D1K11B4U                | 1D1K21B4U             | 50  | 32  | 3x230-400 V~     | 1.1     | 1.5 | 4,09 | 2,4               |       | 17.2 | 17   | 15   | 12.5 |      |      |      |      |       |   |
| NKP-G32-125.1/125/1.5/2  | 1D1K11B5U                | 1D1K21B5U             | 50  | 32  | 3x230-400 V~     | 1.5     | 2   | 5,8  | 3,4               |       | 21   | 20.8 | 19   | 16.8 |      |      |      |      |       |   |
| NKP-G32-125.1/140/2.2/2  | 1D1K11B6U                | 1D1K21B6U             | 50  | 32  | 3x230-400 V~     | 2.2     | 3   | 8,23 | 4,8               |       | 27   | 26.9 | 25.9 | 23   | 19.5 |      |      |      |       |   |
| NKP-G32-125/110/1.1/2    | 1D1111B4U                | 1D1121B4U             | 50  | 32  | 3x230-400 V~     | 1.1     | 1.5 | 4,09 | 2,4               |       | 15.8 | 15.2 | 14.5 | 12.9 | 9.9  |      |      |      |       |   |
| NKP-G32-125/120/1.5/2    | 1D1111B5U                | 1D1121B5U             | 50  | 32  | 3x230-400 V~     | 1.5     | 2   | 5,8  | 3,4               |       | 19.3 | 18.9 | 18.2 | 16.8 | 14.5 |      |      |      |       |   |
| NKP-G32-125/130/2.2/2    | 1D1111B6U                | 1D1121B6U             | 50  | 32  | 3x230-400 V~     | 2.2     | 3   | 8,23 | 4,8               |       | 23.6 | 23.1 | 23   | 21.6 | 19.6 | 16.8 |      |      |       |   |
| NKP-G32-125/142/3/2      | 1D1111B7V                | 1D1121B7V             | 50  | 32  | 3x400 V Δ        | 3       | 4   | -    | 5,9               |       | 28.6 | 28   | 27.6 | 26.5 | 24.6 | 21.8 | 17.9 |      |       |   |
| NKP-G32-160.1/155/2.2/2  | 1D1L11B6U                | 1D1L21B6U             | 50  | 32  | 3x230-400 V~     | 2.2     | 3   | 8,23 | 4,8               |       | 31.7 | 32.4 | 31   | 26.7 |      |      |      |      |       |   |
| NKP-G32-160.1/166/3/2    | 1D1L11B7V                | 1D1L21B7V             | 50  | 32  | 3x400 V Δ        | 3       | 4   | -    | 5,9               |       | 36.7 | 37.3 | 36.3 | 32.8 | 27   |      |      |      |       |   |
| NKP-G32-160.1/177/4/2    | 1D1L11B8V                | 1D1L21B8V             | 50  | 32  | 3x400 V Δ        | 4       | 5.5 | -    | 8,5               |       | 42.7 | 43.4 | 42.6 | 38.5 | 33.9 |      |      |      |       |   |
| NKP-G32-160/151/3/2      | 1D1211B7V                | 1D1221B7V             | 50  | 32  | 3x400 V Δ        | 3       | 4   | -    | 5,9               |       | 30.5 | 30   | 29   | 27   | 24   | 19.5 |      |      |       |   |
| NKP-G32-160/163/4/2      | 1D1211B8V                | 1D1221B8V             | 50  | 32  | 3x400 V Δ        | 4       | 5.5 | -    | 8,1               |       | 36.2 | 36   | 35   | 33.5 | 30.5 | 27   | 22   |      |       |   |
| NKP-G32-160/177/5,5/2    | 1D1211B9V                | 1D1221B9V             | 50  | 32  | 3x400 V Δ        | 5.5     | 7.5 | -    | 10,4              |       | 43.5 | 43.2 | 42.6 | 41.5 | 39   | 36   | 31.5 | 25.5 |       |   |
| NKP-G32-200.1/188/4/2    | 1D1M11B8V                | 1D1M21B8V             | 50  | 32  | 3x400 V Δ        | 4       | 5.5 | -    | 8,1               |       | 45.3 | 44.4 | 40.8 | 34.4 | 26.8 |      |      |      |       |   |
| NKP-G32-200.1/205/5,5/2  | 1D1M11B9V                | 1D1M21B9V             | 50  | 32  | 3x400 V Δ        | 5.5     | 7.5 | -    | 10,4              |       | 56.6 | 55.7 | 52   | 45.8 | 36.2 |      |      |      |       |   |
| NKP-G32-200/190/5.5/2    | 1D1311B9V                | 1D1321B9V             | 50  | 32  | 3x400 V Δ        | 5.5     | 7.5 | -    | 10,4              |       | 46.9 | 46.5 | 45   | 43   | 40   | 35   | 29   |      |       |   |
| NKP-G32-200/210/7.5/2    | 1D1311BAV                | 1D1321BAV             | 50  | 32  | 3x400 V Δ        | 7.5     | 10  | -    | 14                |       | 58.8 | 58   | 57   | 56   | 53   | 49   | 44   |      |       |   |

| MODELO                 | CÓDIGO TURBINA FUNDICIÓN | CÓDIGO TURBINA BRONCE | DNA | DNM | DATOS ELÉCTRICOS |         |     |      | DATOS HIDRÁULICOS |       |      |      |      |      |      |      |      |      |      |      |      |       |   |
|------------------------|--------------------------|-----------------------|-----|-----|------------------|---------|-----|------|-------------------|-------|------|------|------|------|------|------|------|------|------|------|------|-------|---|
|                        |                          |                       |     |     | ALIMENT. 50 Hz   | P2 NOM. |     | In A |                   | m³/h  | 0    | 18   | 24   | 30   | 36   | 42   | 48   | 54   | 60   | 66   | 72   |       |   |
|                        |                          |                       |     |     |                  | kW      | HP  | 230V | 400V              |       |      |      |      |      |      |      |      |      |      |      |      | l/min | 0 |
| NKP-G40-125/107/1.5/2  | 1D2111B5U                | 1D2121B5U             | 65  | 40  | 3x230-400 V~     | 1.5     | 2   | 5,8  | 3,4               | H (m) | 14.7 | 13.8 | 13   | 11.8 | 10.5 | 8.6  | 7    |      |      |      |      |       |   |
| NKP-G40-125/120/2.2/2  | 1D2111B6U                | 1D2121B6U             | 65  | 40  | 3x230-400 V~     | 2.2     | 3   | 8,23 | 4,8               |       | 19   | 17.8 | 17   | 15.9 | 14.6 | 13   | 11   |      |      |      |      |       |   |
| NKP-G40-125/130/3/2    | 1D2111B7V                | 1D2121B7V             | 65  | 40  | 3x400 V Δ        | 3       | 4   | -    | 5,9               |       | 22.8 | 22   | 21.2 | 20.2 | 19   | 17.4 | 15.5 | 13.5 |      |      |      |       |   |
| NKP-G40-125/139/4/2    | 1D2111B8V                | 1D2121B8V             | 65  | 40  | 3x400 V Δ        | 4       | 5.5 | -    | 8,1               |       | 26.4 | 25.6 | 25   | 24   | 23   | 21.5 | 19.5 | 17.5 | 15   |      |      |       |   |
| NKP-G40-160/158/5,5/2  | 1D2211B9V                | 1D2221B9V             | 65  | 40  | 3x400 V Δ        | 5.5     | 7.5 | -    | 10,4              |       | 33.7 | 34   | 33.4 | 32.4 | 31   | 29.5 | 27   | 24   |      |      |      |       |   |
| NKP-G40-160/172/7,5/2  | 1D2211BAV                | 1D2221BAV             | 65  | 40  | 3x400 V Δ        | 7.5     | 10  | -    | 13,4              |       | 40.7 | 40.2 | 40.1 | 39.8 | 38.5 | 37.5 | 35.5 | 33   | 30   | 26.5 |      |       |   |
| NKP-G40-200/210/11/2   | 1D2311BBV                | 1D2321BBV             | 65  | 40  | 3x400 V Δ        | 11      | 15  | -    | 19,4              |       | 57.1 | 56.8 | 56.5 | 56   | 55   | 53   | 50   | 47   | 43.5 | 39   |      |       |   |
| NKP-G40-250/230/15/2   | 1D2411BCV                | 1D2421BCV             | 65  | 40  | 3x400 V Δ        | 15      | 20  | -    | 26,5              |       | 72.5 | 72.5 | 72   | 70   | 68   | 66   | 62.5 | 60   | 56   | 51.5 |      |       |   |
| NKP-G40-250/245/18.5/2 | 1D2411BDV                | 1D2421BDV             | 65  | 40  | 3x400 V Δ        | 18.5    | 25  | -    | 32                |       | 83   | 83   | 82.5 | 81.5 | 80   | 77   | 74   | 71.5 | 67.5 | 63.5 | 58.5 |       |   |
| NKP-G40-250/260/22/2   | 1D2411BEV                | 1D2421BEV             | 65  | 40  | 3x400 V Δ        | 22      | 30  | -    | 38                |       | 96   | 95   | 94.5 | 93.5 | 92   | 90   | 87.5 | 84   | 81   | 76.5 | 71.5 |       |   |



# NKP-G

BOMBAS CENTRÍFUGAS NORMALIZADAS MONOBLOCK



| MODELO                   | A   | B  | E   | F<br>min | G   | H1  | H2  | L   | M1  | M2 | N1  | N2  | N3  | S1  | S2  | W   | X   | H3 | H4 | Ø<br>CIERRE | DNA | DNM | DIMENSIONES<br>EMBALAJE |     |     | VOL.<br>m³ | PESO<br>Kg |
|--------------------------|-----|----|-----|----------|-----|-----|-----|-----|-----|----|-----|-----|-----|-----|-----|-----|-----|----|----|-------------|-----|-----|-------------------------|-----|-----|------------|------------|
|                          |     |    |     |          |     |     |     |     |     |    |     |     |     |     |     |     |     |    |    |             |     |     | L/A                     | L/B | H   |            |            |
| NKP-G32-125.1/102/0.75/2 | 80  | 50 | -   | 234      | 234 | 112 | 140 | 226 | 100 | 70 | 190 | 140 | -   | M10 | -   | -   | 100 | -  | -  | 28          | 50  | 32  | 620                     | 370 | 480 | 0,11       | 30         |
| NKP-G32-125.1/115/1.1/2  | 80  | 50 | -   | 234      | 234 | 112 | 140 | 226 | 100 | 70 | 190 | 140 | -   | M10 | -   | -   | 100 | -  | -  | 28          | 50  | 32  | 620                     | 370 | 480 | 0,11       | 31         |
| NKP-G32-125.1/125/1.5/2  | 80  | 50 | -   | 247      | 234 | 112 | 140 | 226 | 100 | 70 | 190 | 140 | -   | M10 | -   | -   | 100 | -  | -  | 28          | 50  | 32  | 620                     | 370 | 480 | 0,11       | 33         |
| NKP-G32-125.1/140/2.2/2  | 80  | 50 | -   | 272      | 234 | 112 | 140 | 226 | 100 | 70 | 190 | 140 | -   | M10 | -   | -   | 100 | -  | -  | 28          | 50  | 32  | 620                     | 370 | 480 | 0,11       | 34         |
| NKP-G32-125/110/1.1/2    | 80  | 50 | -   | 234      | 234 | 112 | 140 | 226 | 100 | 70 | 190 | 140 | -   | M10 | -   | -   | 100 | -  | -  | 28          | 50  | 32  | 620                     | 370 | 480 | 0,11       | 28         |
| NKP-G32-125/120/1.5/2    | 80  | 50 | -   | 247      | 234 | 112 | 140 | 226 | 100 | 70 | 190 | 140 | -   | M10 | -   | -   | 100 | -  | -  | 28          | 50  | 32  | 620                     | 370 | 480 | 0,11       | 32         |
| NKP-G32-125/130/2.2/2    | 80  | 50 | -   | 272      | 234 | 112 | 140 | 226 | 100 | 70 | 190 | 140 | -   | M10 | -   | -   | 100 | -  | -  | 28          | 50  | 32  | 620                     | 370 | 480 | 0,11       | 34         |
| NKP-G32-125/142/3/2      | 80  | 50 | -   | 301      | 250 | 112 | 140 | 254 | 100 | 70 | 190 | 140 | -   | M10 | -   | -   | 100 | 20 | -  | 28          | 50  | 32  | 670                     | 420 | 540 | 0,152      | 48         |
| NKP-G32-160.1/155/2.2/2  | 80  | 50 | -   | 272      | 245 | 132 | 160 | 226 | 100 | 70 | 240 | 190 | -   | M10 | -   | -   | 100 | -  | -  | 28          | 50  | 32  | 620                     | 370 | 480 | 0,11       | 35         |
| NKP-G32-160.1/166/3/2    | 80  | 50 | -   | 301      | 250 | 132 | 160 | 254 | 100 | 70 | 240 | 190 | -   | M10 | -   | -   | 100 | -  | -  | 28          | 50  | 32  | 670                     | 420 | 540 | 0,152      | 42         |
| NKP-G32-160.1/177/4/2    | 80  | 50 | -   | 301      | 250 | 132 | 160 | 254 | 100 | 70 | 240 | 190 | -   | M10 | -   | -   | 100 | -  | -  | 28          | 50  | 32  | 670                     | 420 | 540 | 0,152      | 59         |
| NKP-G32-160/151/3/2      | 80  | 50 | -   | 301      | 250 | 132 | 160 | 254 | 100 | 70 | 240 | 190 | -   | M10 | -   | -   | 100 | -  | -  | 28          | 50  | 32  | 670                     | 420 | 540 | 0,152      | 45         |
| NKP-G32-160/163/4/2      | 80  | 50 | -   | 301      | 250 | 132 | 160 | 254 | 100 | 70 | 240 | 190 | -   | M10 | -   | -   | 100 | -  | -  | 28          | 50  | 32  | 670                     | 420 | 540 | 0,152      | 32         |
| NKP-G32-160/177/5,5/2    | 80  | 50 | -   | 390      | 300 | 132 | 160 | 293 | 100 | 70 | 240 | 190 | -   | M10 | -   | -   | 100 | 20 | -  | 28          | 50  | 32  | 830                     | 430 | 520 | 0,186      | 51         |
| NKP-G32-200.1/188/4/2    | 80  | 50 | -   | 301      | 279 | 160 | 180 | 254 | 100 | 70 | 240 | 190 | -   | M10 | -   | -   | 100 | -  | -  | 28          | 50  | 32  | 670                     | 420 | 540 | 0,152      | 38         |
| NKP-G32-200.1/205/5,5/2  | 80  | 50 | -   | 390      | 300 | 160 | 180 | 293 | 100 | 70 | 240 | 190 | -   | M10 | -   | -   | 100 | -  | -  | 28          | 50  | 32  | 830                     | 430 | 520 | 0,186      | 54         |
| NKP-G32-200/190/5,5/2    | 80  | 50 | -   | 390      | 300 | 160 | 180 | 293 | 100 | 70 | 240 | 190 | -   | M10 | -   | -   | 100 | -  | -  | 28          | 50  | 32  | 830                     | 430 | 520 | 0,186      | 57         |
| NKP-G32-200/210/7,5/2    | 80  | 50 | -   | 437      | 300 | 160 | 180 | 293 | 100 | 70 | 240 | 190 | -   | M10 | -   | -   | 100 | -  | -  | 28          | 50  | 32  | 830                     | 430 | 520 | 0,186      | 96         |
| NKP-G40-125/107/1.5/2    | 80  | 50 | -   | 247      | 234 | 112 | 140 | 226 | 100 | 70 | 210 | 160 | -   | M10 | -   | -   | 100 | -  | -  | 28          | 65  | 40  | 620                     | 370 | 480 | 0,11       | 34         |
| NKP-G40-125/120/2.2/2    | 80  | 50 | -   | 272      | 234 | 112 | 140 | 226 | 100 | 70 | 210 | 160 | -   | M10 | -   | -   | 100 | -  | -  | 28          | 65  | 40  | 620                     | 370 | 480 | 0,11       | 36         |
| NKP-G40-125/130/3/2      | 80  | 50 | -   | 301      | 300 | 112 | 140 | 254 | 100 | 70 | 210 | 160 | -   | M10 | -   | -   | 100 | 20 | -  | 28          | 65  | 40  | 670                     | 420 | 540 | 0,152      | 47         |
| NKP-G40-125/139/4/2      | 80  | 50 | -   | 301      | 300 | 112 | 140 | 254 | 100 | 70 | 210 | 160 | -   | M10 | -   | -   | 100 | 20 | -  | 28          | 65  | 40  | 670                     | 420 | 540 | 0,152      | 35         |
| NKP-G40-160/158/5,5/2    | 80  | 50 | -   | 390      | 300 | 132 | 160 | 293 | 100 | 70 | 240 | 190 | -   | M10 | -   | -   | 100 | 20 | -  | 28          | 65  | 40  | 830                     | 430 | 520 | 0,186      | 51         |
| NKP-G40-160/172/7,5/2    | 80  | 50 | -   | 437      | 300 | 132 | 160 | 293 | 100 | 70 | 240 | 190 | -   | M10 | -   | -   | 100 | 20 | -  | 28          | 65  | 40  | 830                     | 430 | 520 | 0,186      | 90         |
| NKP-G40-200/210/11/2     | 100 | 67 | 210 | 505      | 350 | 160 | 180 | 343 | -   | -  | 314 | 254 | -   | M12 | -   | 351 | 100 | -  | 20 | 28          | 65  | 40  | 1030                    | 530 | 640 | 0,349      | 170        |
| NKP-G40-250/230/15/2     | 100 | 67 | 210 | 505      | 350 | 160 | 225 | 343 | -   | -  | 314 | 254 | -   | M12 | -   | 351 | 100 | -  | 20 | 28          | 65  | 40  | 1030                    | 530 | 640 | 0,349      | 180        |
| NKP-G40-250/245/18,5/2   | 100 | 67 | 254 | 549      | 350 | 160 | 225 | 343 | -   | -  | 314 | 254 | -   | M12 | -   | 351 | 100 | -  | 20 | 28          | 65  | 40  | 1030                    | 530 | 640 | 0,349      | 192        |
| NKP-G40-250/260/22/2     | 100 | 74 | 241 | 580      | 350 | 180 | 225 | 343 | -   | -  | 345 | 279 | -   | M12 | -   | 364 | 100 | -  | -  | 28          | 65  | 40  | 1030                    | 530 | 640 | 0,349      | 223        |
| NKP-G50-125/115/3/2      | 100 | 50 | -   | 301      | 251 | 132 | 160 | 274 | 100 | 70 | 240 | 190 | -   | M10 | -   | -   | 100 | -  | -  | 28          | 65  | 50  | 670                     | 420 | 540 | 0,152      | 48         |
| NKP-G50-125/125/4/2      | 100 | 50 | -   | 301      | 251 | 132 | 160 | 274 | 100 | 70 | 240 | 190 | -   | M10 | -   | -   | 100 | -  | -  | 28          | 65  | 50  | 670                     | 420 | 540 | 0,152      | 42         |
| NKP-G50-125/135/5,5/2    | 100 | 50 | -   | 390      | 300 | 132 | 160 | 313 | 100 | 70 | 240 | 190 | -   | M10 | -   | -   | 100 | 20 | -  | 28          | 65  | 50  | 830                     | 430 | 520 | 0,186      | 53         |
| NKP-G50-125/144/7,5/2    | 100 | 50 | -   | 437      | 300 | 132 | 160 | 313 | 100 | 70 | 240 | 190 | -   | M10 | -   | -   | 100 | 20 | -  | 28          | 65  | 50  | 830                     | 430 | 520 | 0,186      | 87         |
| NKP-G50-160/153/7,5/2    | 100 | 50 | -   | 437      | 300 | 160 | 180 | 313 | 100 | 70 | 265 | 212 | -   | M10 | -   | -   | 100 | -  | -  | 28          | 65  | 50  | 1030                    | 530 | 640 | 0,349      | 64         |
| NKP-G50-160/169/11/2     | 100 | 67 | 210 | 505      | 350 | 160 | 180 | 343 | -   | -  | 314 | 254 | -   | M12 | -   | 351 | 100 | -  | 20 | 28          | 65  | 50  | 1030                    | 530 | 640 | 0,349      | 96         |
| NKP-G50-200/200/15/2     | 100 | 67 | 210 | 505      | 350 | 160 | 200 | 343 | -   | -  | 314 | 254 | -   | M12 | -   | 351 | 100 | -  | 20 | 28          | 65  | 50  | 1030                    | 530 | 640 | 0,349      | 176        |
| NKP-G50-200/210/18,5/2   | 100 | 67 | 254 | 549      | 350 | 160 | 200 | 343 | -   | -  | 314 | 254 | -   | M12 | -   | 351 | 100 | -  | 20 | 28          | 65  | 50  | 1030                    | 530 | 640 | 0,349      | 187        |
| NKP-G50-200/219/22/2     | 100 | 74 | 241 | 580      | 350 | 160 | 200 | 343 | -   | -  | 345 | 279 | -   | M12 | -   | 364 | 100 | -  | -  | 28          | 65  | 50  | 1030                    | 530 | 640 | 0,349      | 218        |
| NKP-G50-250/230/22/2     | 100 | 74 | 241 | 580      | 350 | 180 | 225 | 343 | -   | -  | 345 | 279 | -   | M12 | -   | 364 | 100 | -  | -  | 28          | 65  | 50  | 1030                    | 530 | 640 | 0,349      | 223        |
| NKP-G50-250/257/30/2     | 100 | 85 | 305 | 670      | 400 | 200 | 225 | 343 | -   | -  | 388 | 318 | -   | M14 | -   | 376 | 100 | -  | -  | 28          | 65  | 50  | 1130                    | 580 | 740 | 0,485      | 351        |
| NKP-G65-125/120-110/4/2  | 100 | 65 | -   | 301      | 286 | 160 | 180 | 274 | 125 | 95 | 280 | 212 | -   | M10 | -   | -   | 100 | -  | -  | 28          | 80  | 65  | 670                     | 420 | 540 | 0,152      | 40         |
| NKP-G65-125/127/5,5/2    | 100 | 65 | -   | 390      | 300 | 160 | 180 | 313 | 125 | 95 | 280 | 212 | -   | M10 | -   | -   | 100 | -  | -  | 28          | 80  | 65  | 830                     | 430 | 520 | 0,186      | 55         |
| NKP-G65-125/137/7,5/2    | 100 | 65 | -   | 437      | 300 | 160 | 180 | 313 | 125 | 95 | 280 | 212 | -   | M10 | -   | -   | 100 | -  | -  | 28          | 80  | 65  | 830                     | 430 | 520 | 0,186      | 94         |
| NKP-G65-160/157/11/2     | 100 | 67 | 210 | 505      | 350 | 160 | 200 | 343 | -   | -  | 314 | 254 | -   | M12 | -   | 351 | 100 | -  | 20 | 28          | 80  | 65  | 1030                    | 530 | 640 | 0,349      | 166        |
| NKP-G65-160/173/15/2     | 100 | 67 | 210 | 505      | 350 | 160 | 200 | 343 | -   | -  | 314 | 254 | -   | M12 | -   | 351 | 100 | -  | 20 | 28          | 80  | 65  | 1030                    | 530 | 640 | 0,349      | 172        |
| NKP-G65-200/190/18,5/2   | 100 | 67 | 254 | 549      | 350 | 160 | 225 | 343 | -   | -  | 314 | 254 | -   | M12 | -   | 351 | 100 | -  | 20 | 28          | 80  | 65  | 1030                    | 530 | 640 | 0,349      | 192        |
| NKP-G65-200/200/22/2     | 100 | 74 | 241 | 580      | 350 | 180 | 225 | 343 | -   | -  | 345 | 279 | -   | M12 | -   | 364 | 100 | -  | -  | 28          | 80  | 65  | 1030                    | 530 | 640 | 0,349      | 223        |
| NKP-G65-200/219/30/2     | 100 | 85 | 305 | 670      | 400 | 200 | 225 | 343 | -   | -  | 388 | 318 | -   | M14 | -   | 376 | 100 | -  | -  | 28          | 80  | 65  | 1130                    | 580 | 740 | 0,485      | 351        |
| NKP-G80-160/147-127/11/2 | 125 | 67 | 210 | 505      | 350 | 160 | 225 | 368 | -   | -  | 314 | 254 | -   | M12 | -   | 351 | 140 | -  | 20 | 28          | 100 | 80  | 1030                    | 530 | 640 | 0,349      | 179        |
| NKP-G80-160/153/15/2     | 125 | 67 | 210 | 505      | 350 | 160 | 225 | 368 | -   | -  | 314 | 254 | -   | M12 | -   | 351 | 140 | -  | 20 | 28          | 100 | 80  | 1030                    | 530 | 640 | 0,349      | 181        |
| NKP-G80-160/163/18,5/2   | 125 | 67 | 254 | 549      | 350 | 160 | 225 | 368 | -   | -  | 314 | 254 | -   | M12 | -   | 351 | 140 | -  | 20 | 28          | 100 | 80  | 1030                    | 530 | 640 | 0,349      | 192        |
| NKP-G80-160/169/22/2     | 125 | 74 | 241 | 580      | 350 | 180 | 225 | 368 | -   | -  | 345 | 279 | -   | M12 | -   | 364 | 140 | -  | -  | 28          | 100 | 80  | 1130                    | 580 | 740 | 0,485      | 221        |
| NKP-G80-200/190/30/2     | 125 | 65 | 305 | 670      | 400 | 180 | 250 | 398 | 125 | 95 | 345 | 280 | 318 | M10 | M16 | 406 | 140 | 20 | -  | 28          | 100 | 80  | 1130                    | 580 | 740 | 0,485      | 374        |